

RT SIDE 1) cut out bold face vocabs at top & bottom + paste into IAN  
LEFT SIDE 2) cut out each box, mix up order + then paste to IAN in correct order.

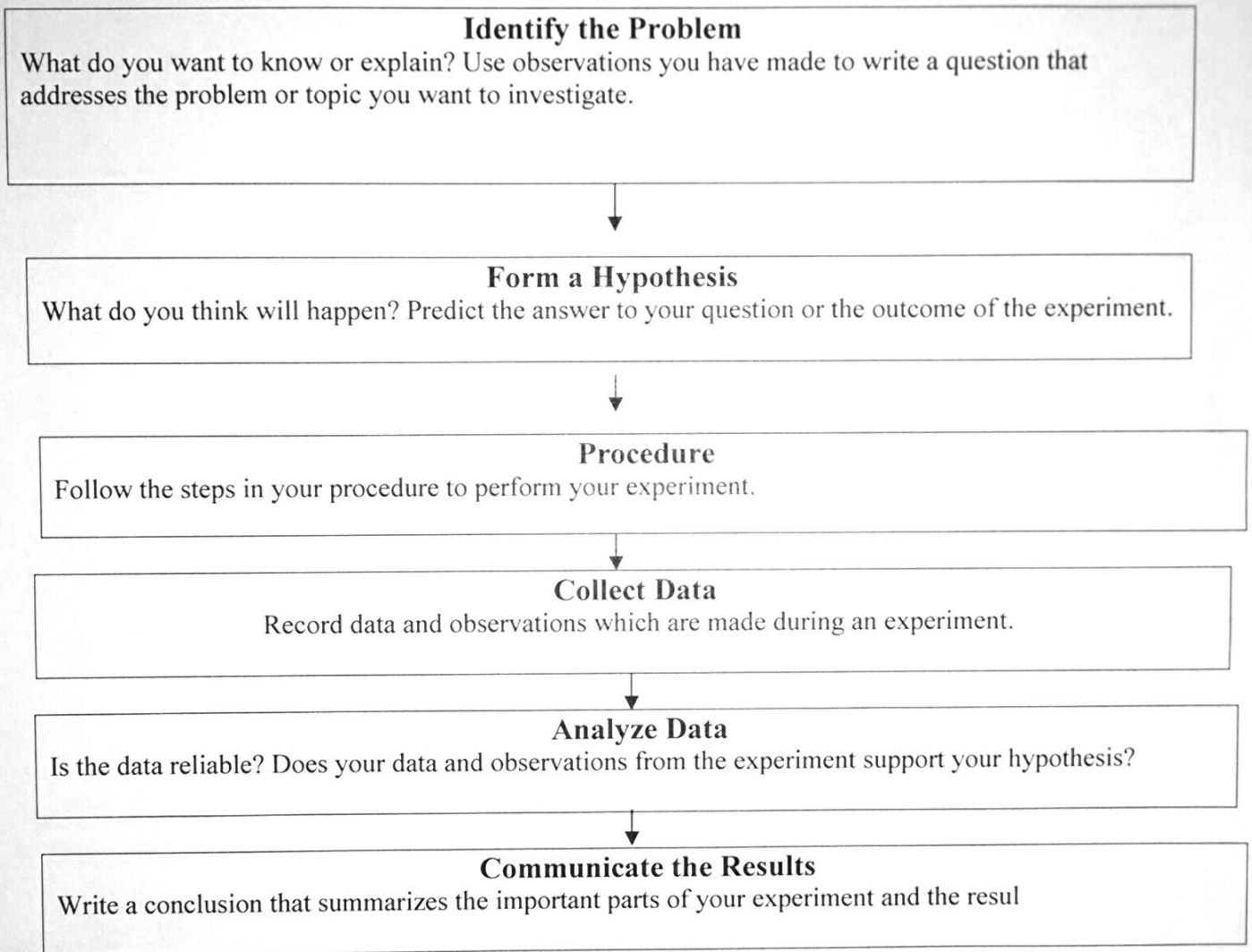
# Scientific Method

**What is the scientific method?** It is a process that is used to find answers to questions about the world around us.

**Is there only one "scientific method"?** No, there are several versions of the scientific method. Some versions have more steps, while others may have only a few. However, they all begin with the identification of a problem or questions to be answered based on observations of the world around us and provide an organized method for conducting and analyzing an experiment.

**What is a hypothesis?** It is an educated guess based on observations and your knowledge of the topic.

**What is data?** It is information gathered during an experiment.



## Vocabulary:

**Dependent Variable:** The factor that you measure at the end of the experiment.

**Independent Variable:** The factor you change.

**Control:** The group that is not experimented on

**Variable:** Any factor that you changed during a controlled experiment.